



WOMEN'S SIG

(Held in conjunction with the New York National Conference)



Monday, December 9, 2013 - 4:00 – 5:30 pm

New York Hilton Hotel – Mercury Ballroom
1335 Avenue of the Americas - New York, NY

Another New York National Conference means it's time for the annual spectacular year-end session from the Women's Special Industry Group! RSVP now for what is always a memorable and informative event – and the party of the year!

Building the Boroughs: Lessons in Urban Development

While the glamor and lure of Manhattan can never be denied, developers and retailers are now turning to the areas where most New Yorkers actually live: the outer boroughs of Brooklyn, Queens, the Bronx and Staten Island. Interest and new construction are at an all-time high, providing lessons for all U.S. major and satellite cities in urban building. Listen to a panel of developers and officials active in the market as they discuss the opportunities and challenges inherent in everyday New York.

MODERATOR:

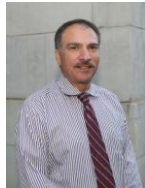


FAITH HOPE CONSOLO

Chairman

The Retail Group, Douglas Elliman Real Estate
New York, NY

INDUSTRY EXPERTS:



RICHARD BEARAK
Director of Land Use
Office of the President
of the Borough of Brooklyn
Brooklyn, NY



SETH BORNSTEIN
Executive Director
Queens Economic Development Corporation
Kew Gardens, NY



INDUSTRY EXPERTS:



MELISSA BURCH
EVP of Commercial and Residential
Development
Forest City Enterprises
Brooklyn, NY



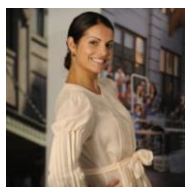
PAUL CAMELLA
Director of Development
Welco Realty, Inc.
New Rochelle, NY



MARLENE CINTRON
President
The Bronx Overall Economic Development
Corporation
Bronx, NY



PATRICIA D. DUNPHY
Senior Vice President
Rockrose Development Corp.
New York, NY



CAROLINE PARDO
Director of Leasing
Jamestown Properties
New York, NY

REGISTRATION:

There is no separate fee to attend if you are a registrant of the New York National Conference and are a member of ICSC. **RSVP's are required.**

If you are **not a member** of ICSC and/or **not a paid registrant** of this conference the **fee is \$60 advance/\$75 on-site.** Click here to attend the SIG www.icsc.org/2013SIG17

